

# IMPORTANT SAFETY INSTRUCTIONS

When using electrical appliances, especially when children are present, basic safety precautions should always be taken, including the following:

## READ ALL INSTRUCTIONS BEFORE USING

**DANGER** — Any appliance is electrically live even when the switch is off.

To reduce the risk of death by electric shock:

1. Always unplug appliance immediately after using.
  2. Do not place or store appliance where it can fall or be pulled into a tub or sink.
  3. Do not place in, or drop into water or other liquid.
  4. If an appliance falls into water, unplug it immediately. **Do not reach into the water.**
- WARNING** — To reduce the risk of burns, electrocution, fire, or injury to persons:
1. This appliance should never be left unattended when plugged in.
  2. This appliance should not be used by, on, or near children or individuals with certain disabilities.
  3. Use this appliance only for its intended use as described in this manual. Do not

use attachments not recommended by the manufacturer.

4. Never operate this appliance if it has a damaged cord or plug, if it is not working properly, or if it has been dropped or damaged, or dropped into water. Do not attempt to repair the appliance. Incorrect reassembly or repair could cause a risk of fire, electric shock, or injury to persons when the appliance is used. Return the appliance to an authorized service centre for examination and repair.

5. Keep the cord away from heated surfaces. Do not allow cord to contact heated surfaces. Do not pull or twist cord. Let appliance cool completely before putting away. Loop cord loosely around appliance when storing.

6. This appliance has a polarized plug (one blade is wider than the other). As a safety feature, this plug will fit in a polarized outlet only one way. If the plug does not fit fully in the outlet, reverse the plug. If it still does not fit, contact a qualified electrician. Do not attempt to defeat this safety feature.

7. Never drop or insert any object into any opening or hose.

8. Do not use outdoors or operate where aerosol (spray) products are being used or where oxygen is being administered.

9. Do not use an extension cord to operate appliance.

10. Surfaces of this appliance may be hot when in use. Do not let eyes or bare skin touch heated surfaces.

11. Do not place the steam nozzle directly on

any surface or on the appliance power cord while it is hot or plugged in. Use the stand provided.

12. Unplug this appliance before filling or emptying. Do not overfill.

13. While emitting steam, this appliance may cause burns if it is used too closely to the skin, scalp or eyes, or if it is used incorrectly. To reduce the risk of contact with hot water emitting from steam vents, test appliance before each use by holding it away from body.

14. Do not operate steamer without properly filling the water container.

15. Always keep the hose and nozzle elevated above the water container.

16. Never yank cord to disconnect from outlet; instead, grasp plug and pull to disconnect.

17. Burns could occur from touching hot metal parts, hot water, or steam. Use care when removing water tank or when you turn a steam appliance upside down – there may be hot water in reservoir.

18. To reduce likelihood of circuit overload, do not operate another high wattage appliance on the same circuit.

19. If an extension cord is absolutely necessary, a 15 ampere rated cord should be used. Cords rated for less amperage may overheat. Care should be taken to arrange the cord so that the cord cannot be pulled or tripped over.

20. Never pour water directly into reservoir. Put water only in water tank.

# SAVE THESE INSTRUCTIONS

## FOR HOUSEHOLD USE ONLY

### UNPACKING INSTRUCTIONS

Place the box on a large sturdy flat surface. Carefully remove the appliance from the packing material. Keep all plastic bags away from children.

### STEAMER ASSEMBLY

#### STEP 1 - Assembling the Support Rod

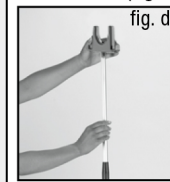
1. The support rod comes in several parts: 3 metal rods, marked “1”, “2”, “3”; three plastic connectors, and one T-nozzle cradle.



2. Insert rod 1 into receptacle in base (fig. a).

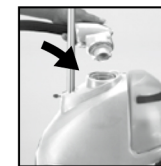


3. Slide plastic connector onto rod 1 (fig. b).  
4. Insert rod 2 into plastic connector (fig. c).  
5. Slide another plastic connector onto rod 2 (fig. b). Insert rod 3 into plastic connector (fig. c).  
6. Slide T-nozzle cradle onto rod 3 (fig. d).



#### STEP 2 - Attaching the Steamer Hose

Insert hose cap into steamer housing and twist clockwise to securely lock hose onto housing.



1. Insert.



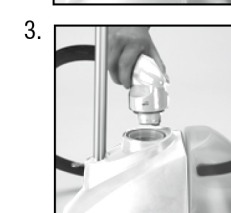
2. Turn.



3. Lock.

### Removing the Steamer Hose (make sure unit has cooled)

To remove, turn counterclockwise to release. Turn slowly.



One quarter turn.

Push down.

Continue to turn until hose is released.

**Hose may be stiff upon removal from box. Hose will relax after initial use. T-handle will sit properly on pole support once hose is relaxed.**

### TROUBLESHOOTING

- PROBLEM - Steamer fails to heat  
CAUSE - Steamer not plugged in  
SOLUTION - Plug into electrical outlet
- PROBLEM - No steam  
CAUSE - Water level is low  
SOLUTION - Turn I/O switch off and refill water container
- PROBLEM - Water drips from nozzle  
CAUSE - Condensation in hose  
SOLUTION - Hold the hose vertically and allow water to drain back into unit
- PROBLEM - Nozzle gurgles  
CAUSE - Condensation in hose  
SOLUTION - Hold the hose vertically and allow water to drain back into unit
- PROBLEM - Poor steam performance  
CAUSE - Sediment in container  
SOLUTION - Decalcify reservoir and water container

**Note: Minerals in water will vary in different areas. To insure continued operation of the steamer, never store without cleaning and removing excess water from the reservoir and water container.**



# OPERATING INSTRUCTIONS

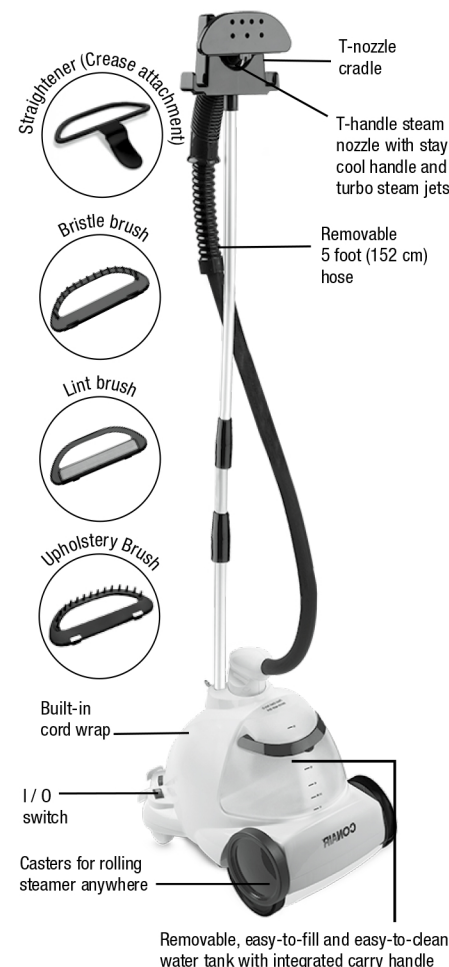
### BEFORE FILLING THE WATER CONTAINER

Turn the water container upside down and inspect to make sure the valve and spring assembly are functioning. Place the container in the reservoir and check that it is seated securely. If the container has been stored with water inside, it may be necessary to remove the water and clean the container. Follow the steps for care and cleaning.

### FILLING THE WATER CONTAINER (PRIOR TO PLUGGING IN THE APPLIANCE)

Remove the water container with the handle and turn upside down. Unscrew the valve in the center of the base. Fill container by holding container under a source of running cold water until the container is filled to the desired level. Do not overfill. Screw the valve cap onto the water container and return the container to the upright position. Place the water container onto the base and make certain it is seated properly in the cavity. **DO NOT FILL THE CONTAINER WITH HOT WATER.**

### GETTING TO KNOW YOUR STEAMER



This steamer comes with the following accessories:

- Lint brush: snap onto the T-nozzle and use before steaming to remove lint from fabric.
- Bristle brush: snap onto the T-nozzle and use to remove loose dirt and dust from fabric before steaming.
- Straightener (Crease attachment): snap onto the T-nozzle, great for maintaining or creating creases.
- Uphostery Brush: snap onto the T-nozzle, great for loosening stiff fibres and dents left in carpets from furniture.

### OPERATING THE STEAMER

1. Make sure the I / O switch is in the O position.
2. Make sure all hose connections are secure and tight.
3. Make sure the rod is fully assembled and the hose is not twisted or kinked.
4. Plug the steamer cord into a normal electrical outlet.
5. Turn the I / O switch to the I position.
6. The switch will light to indicate when power is on.
7. Steam will be produced from the nozzle in about one minute.

**CAUTION: Hose will be hot when in use. Avoid prolonged contact.**

# CONAIR® fabric steamer



## HAVE A QUESTION?

Please do not return this product to the retailer.

### CALL US FIRST!

Our customer service and product experts are ready to answer ALL your questions. Please call our TOLL-FREE customer service number at :

**1-855-926-6247**

Or visit us online at :

**www.conaircanada.ca**

### Instructions for Use

For your safety and continued enjoyment of this product, always read the instruction book carefully before using.

**Model GS7XRC**

### CLEANING AND STORING

1. Turn the I / O switch to the O position and unplug from the power source.
2. Wait for the steamer to cool completely for at least 30 minutes.
3. Unplug power cord and gently wrap around built-in cord wrap.
4. Remove the steamer hose.
5. Remove the water container from unit, unscrew valve and empty unused contents. Allow to air dry.
6. Remove excess water from the reservoir by lifting the unit and pouring into a sink.
7. Replace water container.
8. Store the unit.

### OTHER IMPORTANT NOTES

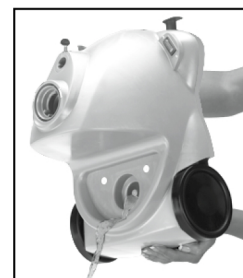
During operation, the steamer hose may gurgle. This is a normal result of condensation collecting inside the hose. Simply lift the T-handle upward until the hose is extended to its full height. The gurgling will disappear when the excess moisture inside the hose has had a chance to drain back into the base.



### DECALCIFICATION

If the appliance begins to produce steam more slowly than usual, if the steamer stops producing steam and then starts again, you may need to decalcify your steamer. Decalcification refers to removing the calcium deposits which form over time on the metal parts of the steamer. For best performance from your Conair® Fabric Steamer, decalcify the unit from time to time. The frequency depends upon the hardness of your tap water and how often you use the steamer.

To decalcify, use a solution of 1/3 white vinegar and 2/3 water in the water container. Replace the water container in the unit. Plug the unit into electrical outlet. Turn the on position and run until half the amount has steamed (1 liter). Turn the unit to the off position, unplug from electrical outlet, and allow to sit for 30 minutes. Remove water container.



Remove excess water from the reservoir by lifting the unit, inverting and pouring the unit over sink, and allowing water to drain from internal reservoir. Repeat the above procedure as many times as necessary until a normal steam rate returns, usually 2-3 times. With each repeated cycle, use a fresh solution of vinegar and water. Run one cycle of fresh, cold water through the unit at the completion of decalcification, before using the unit again to steam garments.

### HOW TO STEAM

Grasp the T-handle steam nozzle with the steam jets facing away from you. Begin at the bottom of the fabric to allow the steam to rise inside and outside, removing wrinkles. Slowly move the nozzle from the bottom to the top of the fabric. Remove the nozzle from the garment and smooth the fabric with your free hand. Some fabrics are best steamed on the underside of the material. This will allow the fibers of the fabric to relax, eliminating wrinkles.

**NOTE:** Test fabric for color fastness in an inconspicuous spot. Drape linens, towels, handkerchiefs and napkins over a rod or place on a towel rack.

Heavier fabrics may require repeated steaming. Repeat as necessary.

With practice, you will gain speed and efficiency. You will soon learn which fabrics require multiple steam applications.

Do not directly touch velvet or silk with the steam head.